

The background of the slide features a faded, large-scale logo for Memphis University School. The logo is rendered in a reddish-brown color and includes the school's name in a stylized font, with a banner across the middle that reads "MEMPHIS".

---

# SC2 Memphis

---

SARAH SIELOFF

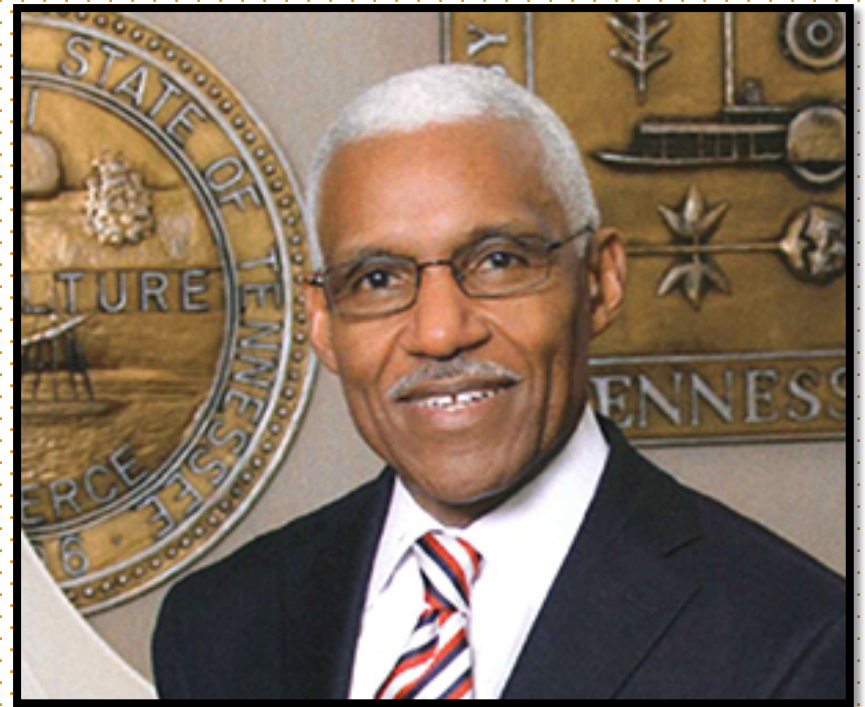
MEMPHIS TEAM LEAD

WHITE HOUSE COUNCIL ON STRONG CITIES, STRONG COMMUNITIES

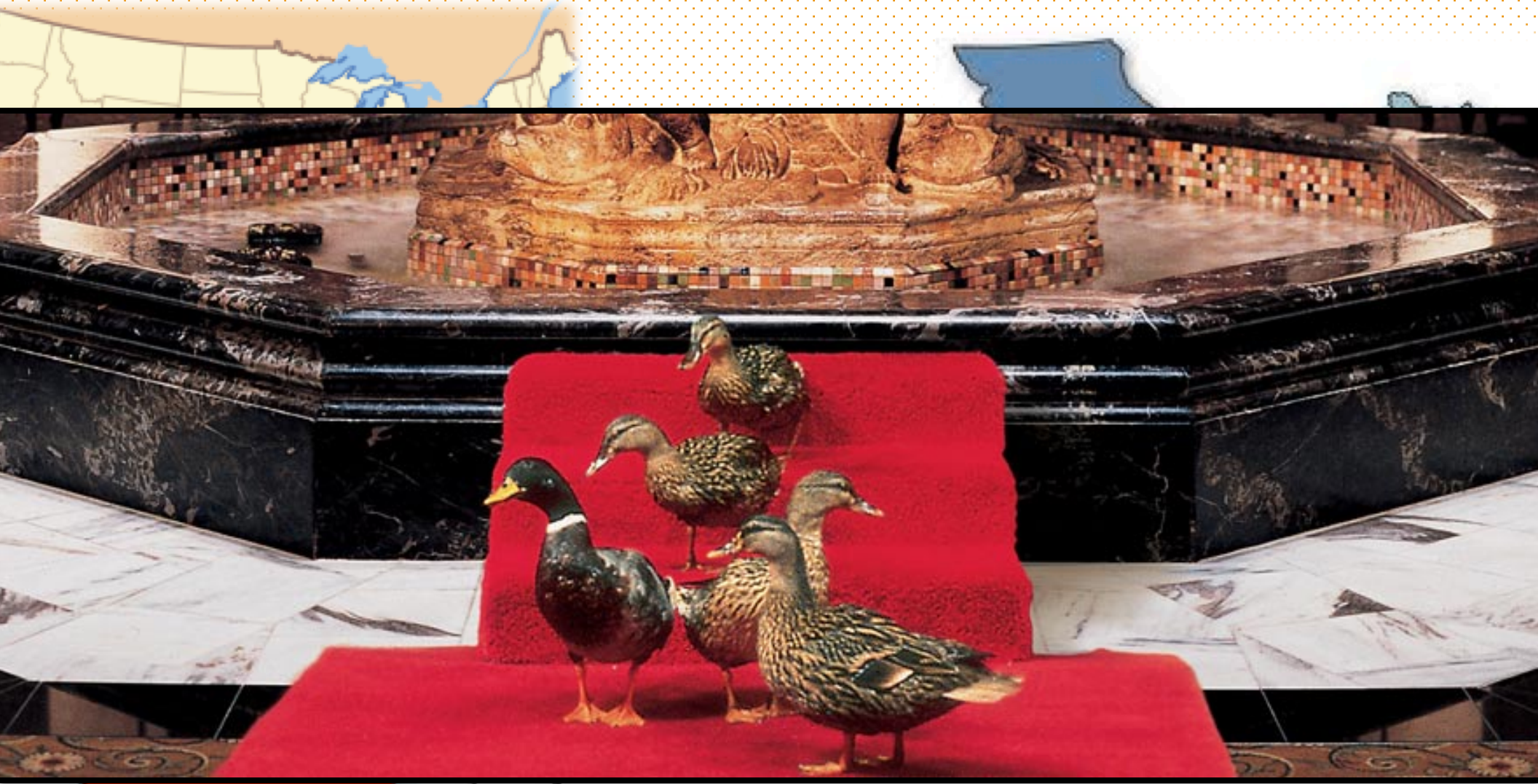
[SARAH.L.SIELOFF@HUD.GOV](mailto:SARAH.L.SIELOFF@HUD.GOV)

A solid orange horizontal bar at the bottom of the slide.

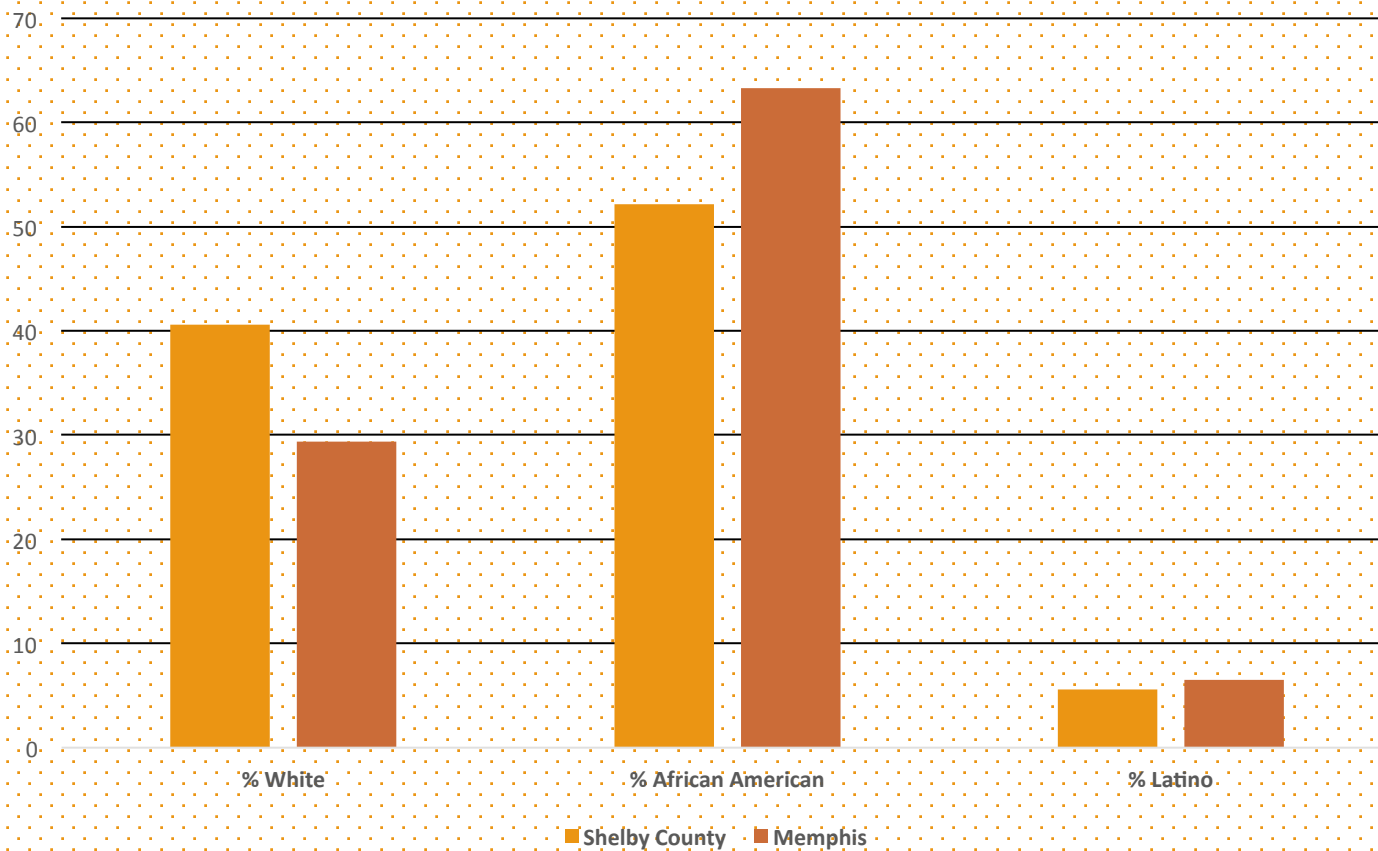
# Memphis Mayor A C Wharton, Jr.







# Racial demographics in Memphis



Total population (2010)

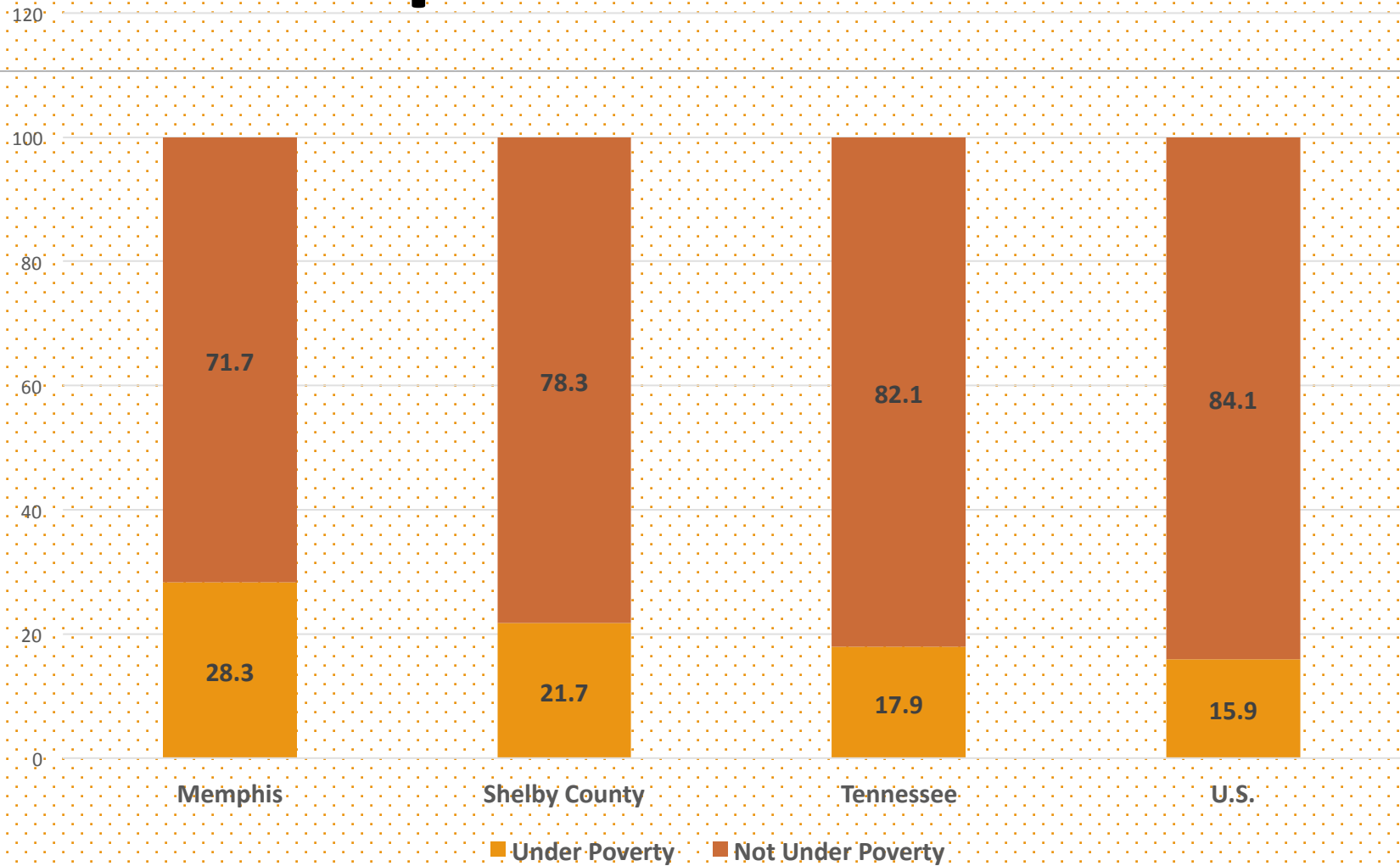
Memphis:

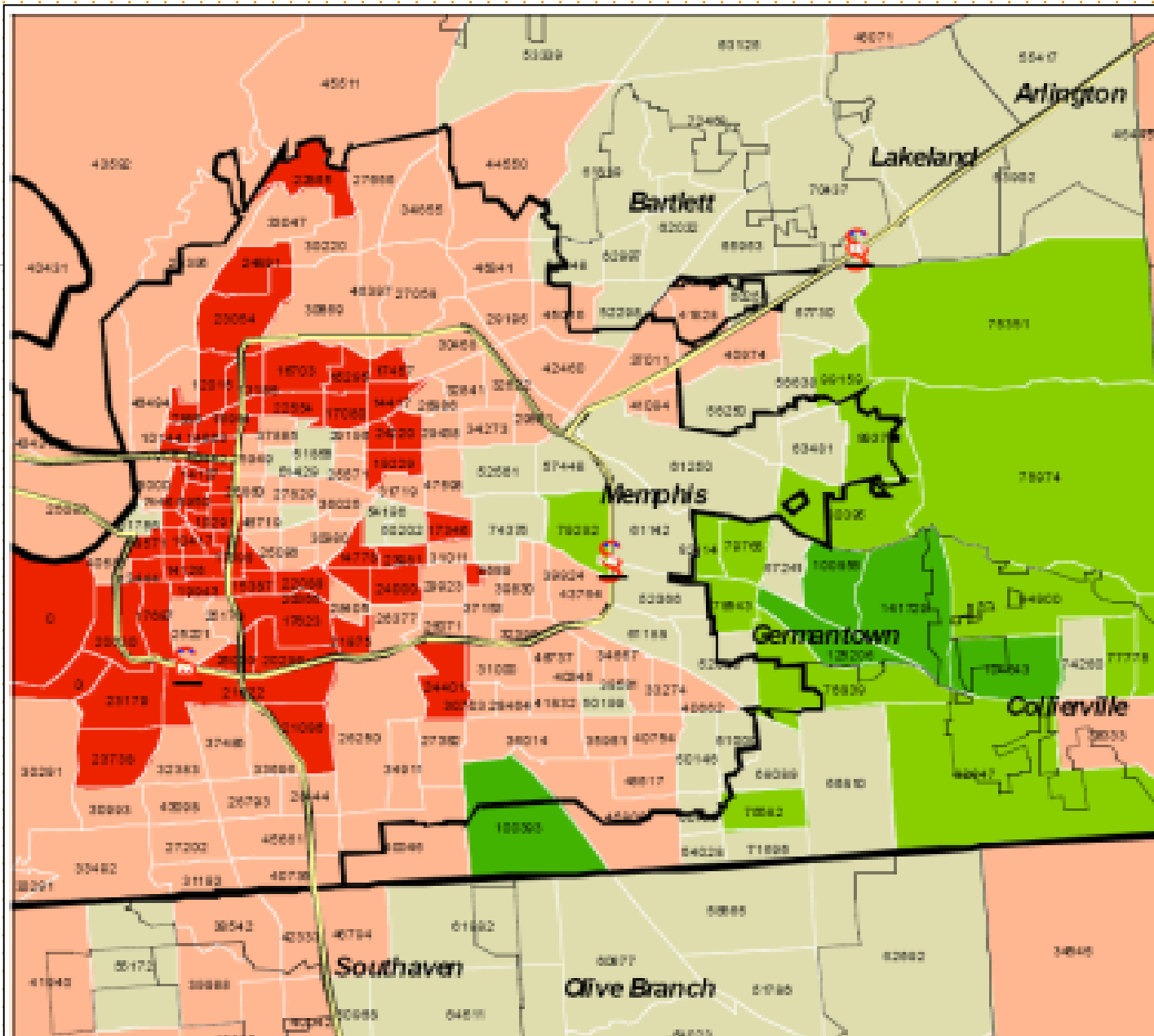
Shelby County:

Memphis is 70% of Shelby County population

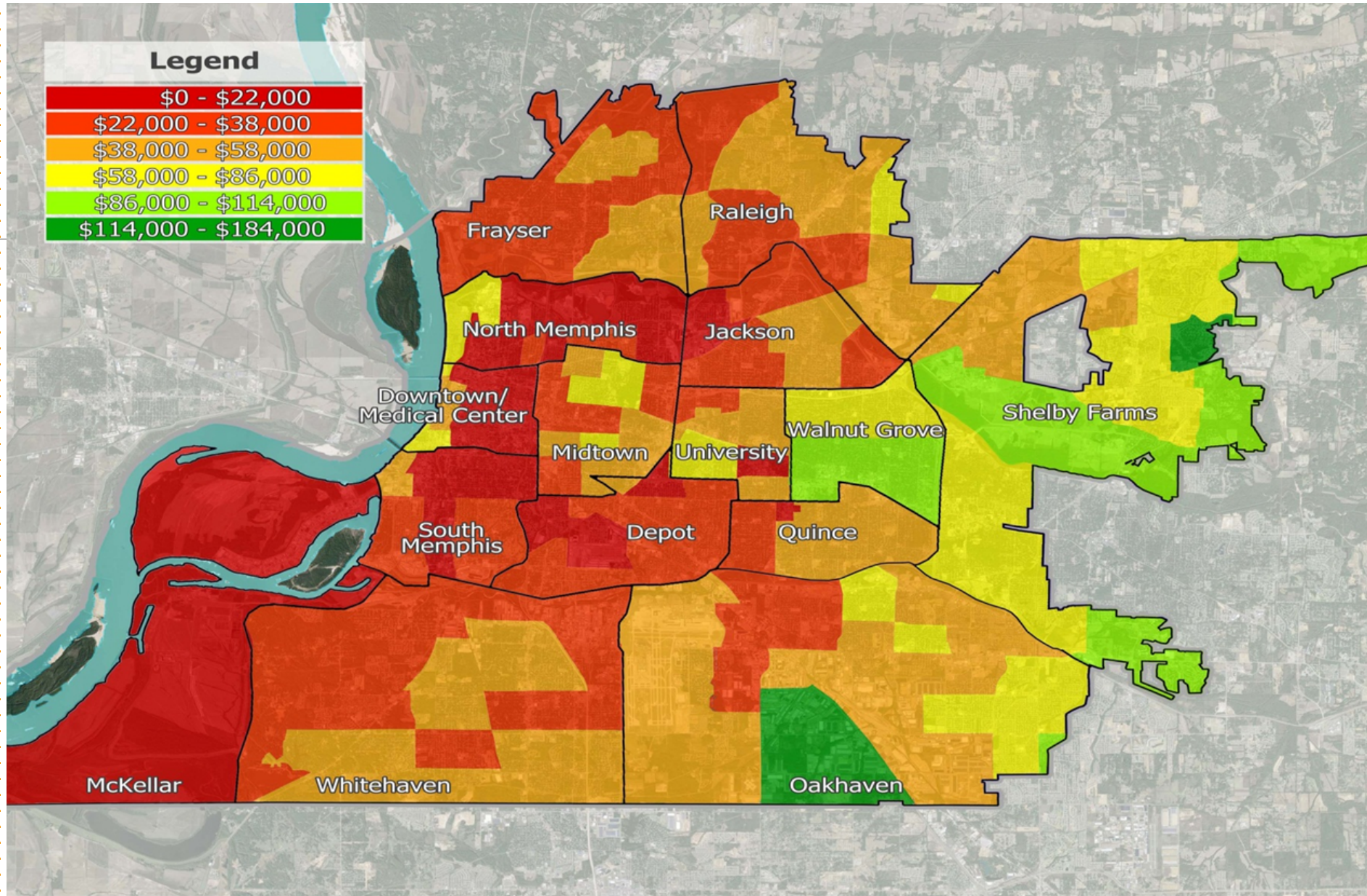


# Percent of Population under Poverty





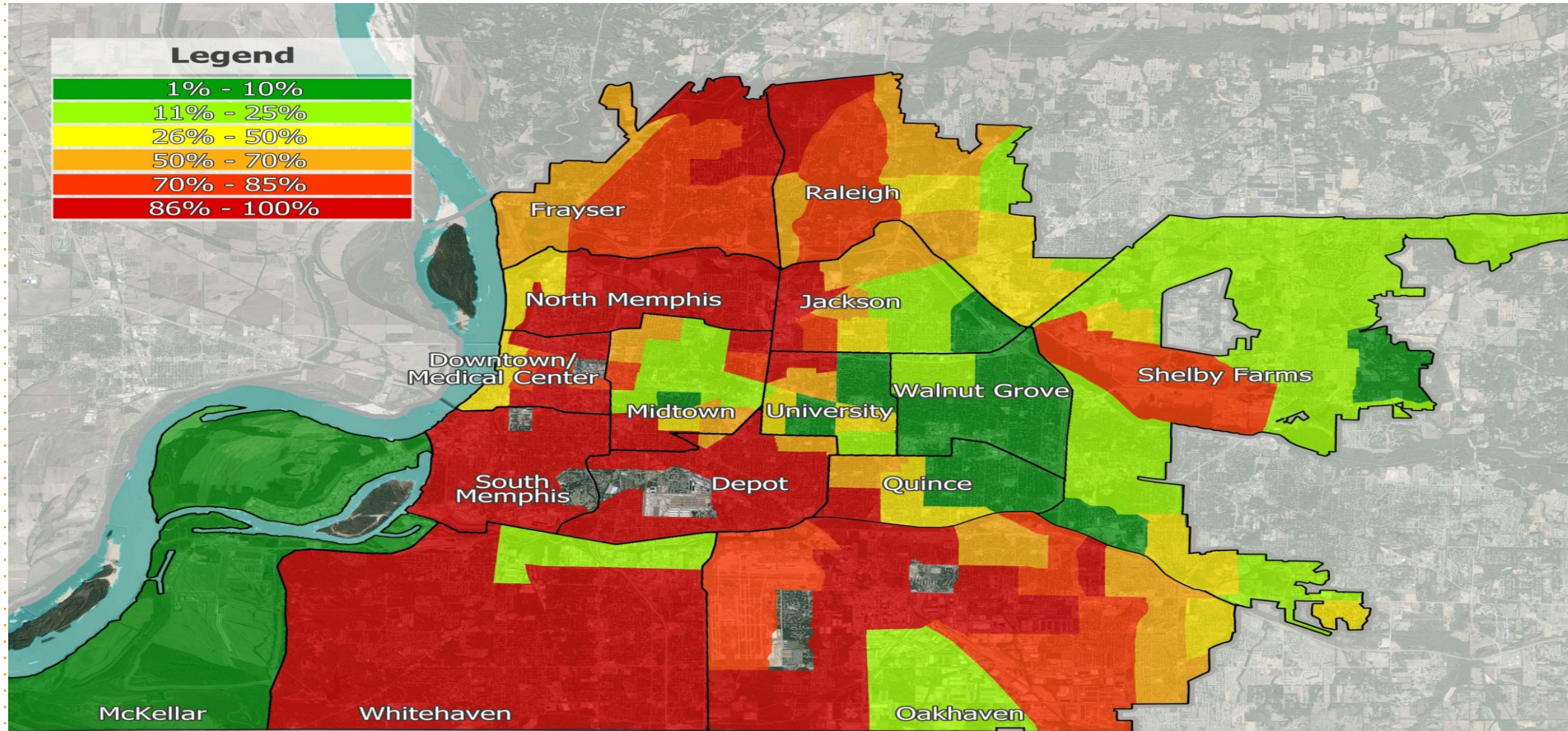




2008 Median Household Income



# THE CENTER FOR PROSPERITY AND EMPOWERMENT



Percent Minority Population



# SC2 Memphis is 11 feds.

---

Team Lead (Memphis, TN)

DOT/Federal Highway Administration (Nashville, TN)

DOT/Federal Aviation Administration (Jackson, MS)

U.S. Department of Housing and Urban Development (Memphis, TN)

General Services Administration (Louisville, KY)

Health and Human Services (Washington, D.C.)

Corporation for National and Community Service (Nashville, TN)

Environmental Protection Agency (Atlanta, GA)

U.S. Department of Education (Washington, D.C.)

Also working closely with Small Business Administration (Nashville, TN) and U.S. Department of Agriculture (Washington, D.C. + state offices)

**Bloomberg Philanthropies**



**\$: DOJ**



**DOJ +  
HUD +  
CNCS +  
City +  
Bloomberg**

**\$: DOJ**

**OPERATION: SAFE  
COMMUNITY**  
A MEMPHIS FAST FORWARD INITIATIVE

**\$: City**





# HUD + MPD + property owners and managers



SA

# GSA + SBA + MORE + SC2





# USDA + local stakeholders + SC2

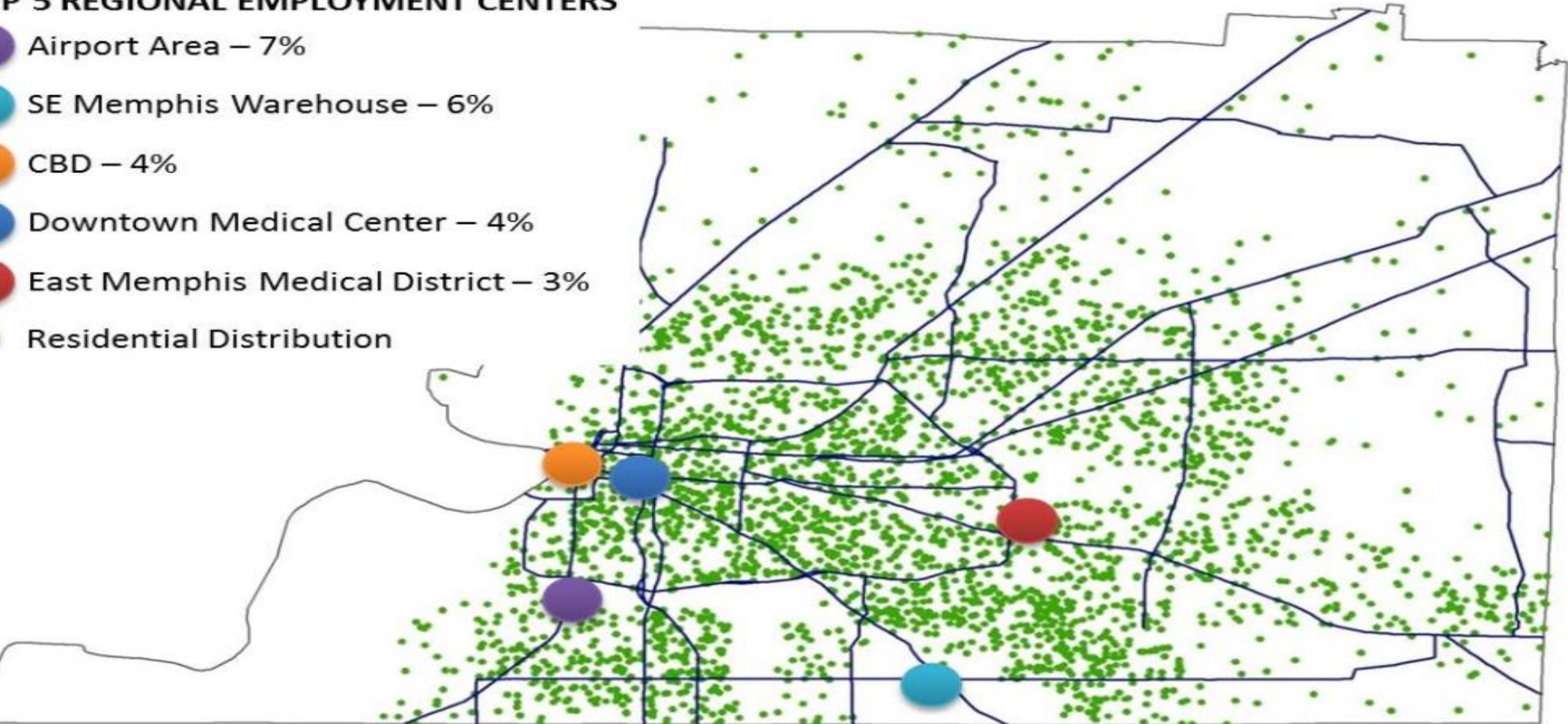


# THE CENTER FOR PROSPERITY AND EMPOWERMENT

## REGIONAL EMPLOYMENT CENTERS

### TOP 5 REGIONAL EMPLOYMENT CENTERS

- Airport Area – 7%
- SE Memphis Warehouse – 6%
- CBD – 4%
- Downtown Medical Center – 4%
- East Memphis Medical District – 3%
- Residential Distribution



Source: Dane Forline – The University of Memphis & Analysis of Census Block Group